

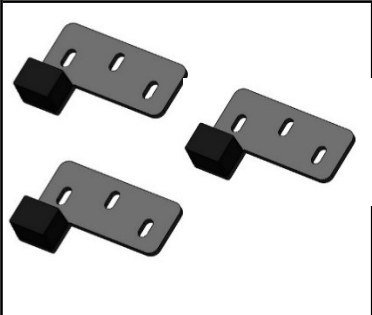
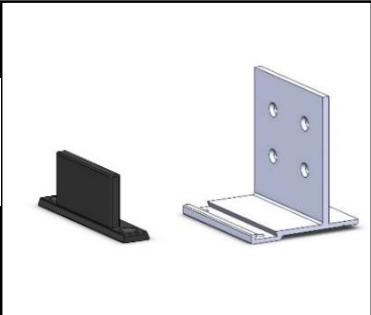
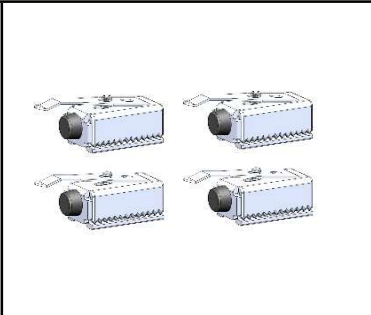
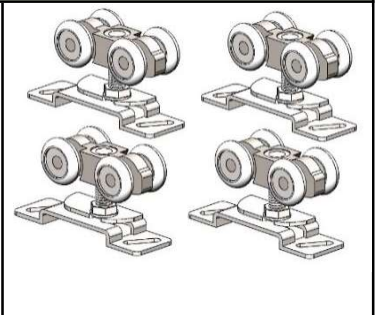
Installation Instruction for Telescopic Cavity System

(for 2, 3 or 4 staking doors)





System Specification:

Number of doors = 2 > 4	Orientation = Single or Doublesided
Maximum Door Width = 1200mm	Minimum Door Width = 500mm
Door Thickness Range = 35 > 42mm	Maximum Weight per Leaf = 80kg

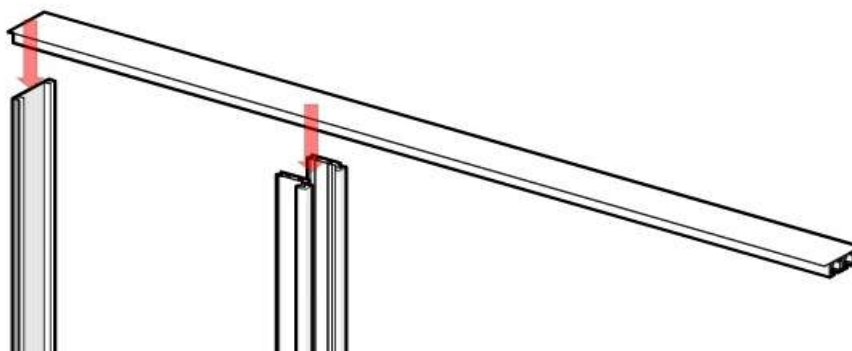
Contents of Kit:

			
3 x Stacking door kit (for 2 door panels)	1 x J-Shape Guide	4 x Stoppers	4 x Roller kits

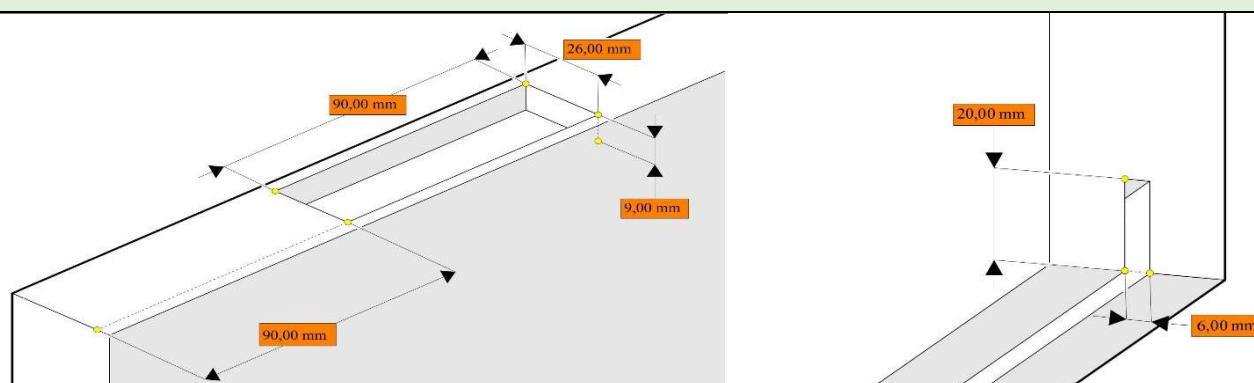
Configuration:

LH

RH

3 Doors

4 Doors


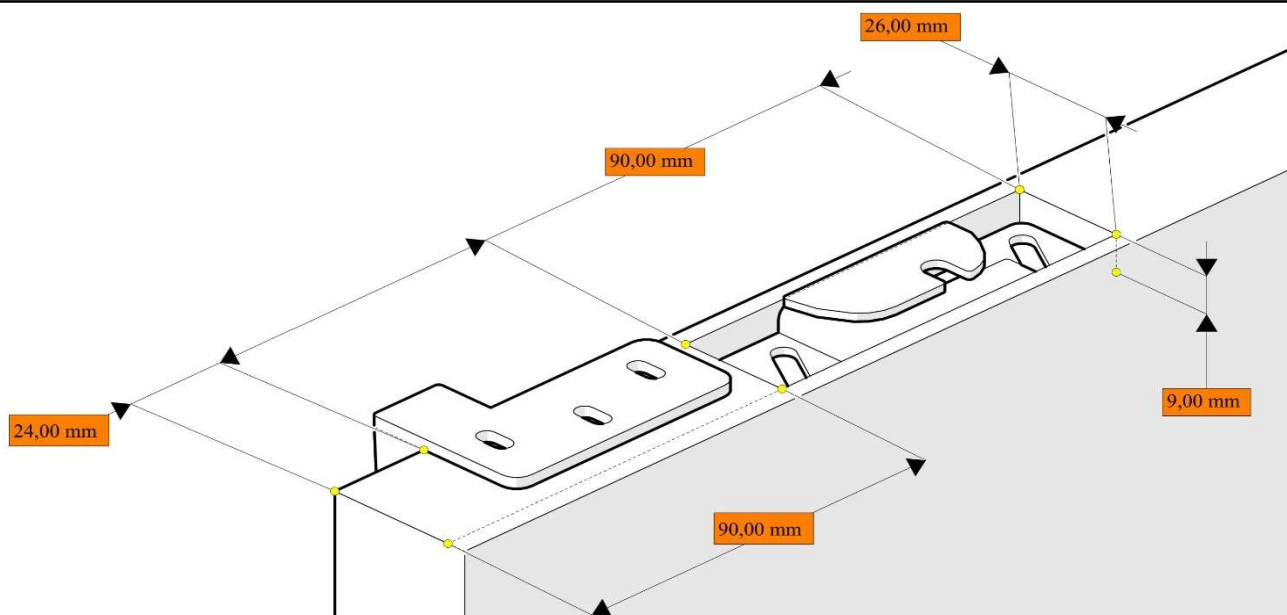
Step 1 Assembl top track whit pocket



Step 2 Prepare door (top and bottom recesse)

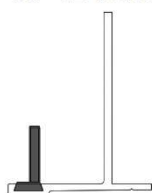


Step 3 Mounting Roller Brackets and stacking kit

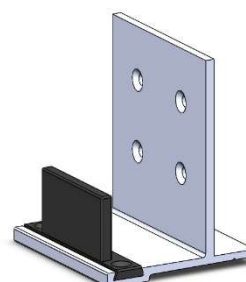
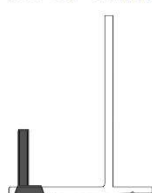


Step 4 Prepare J-shape guide

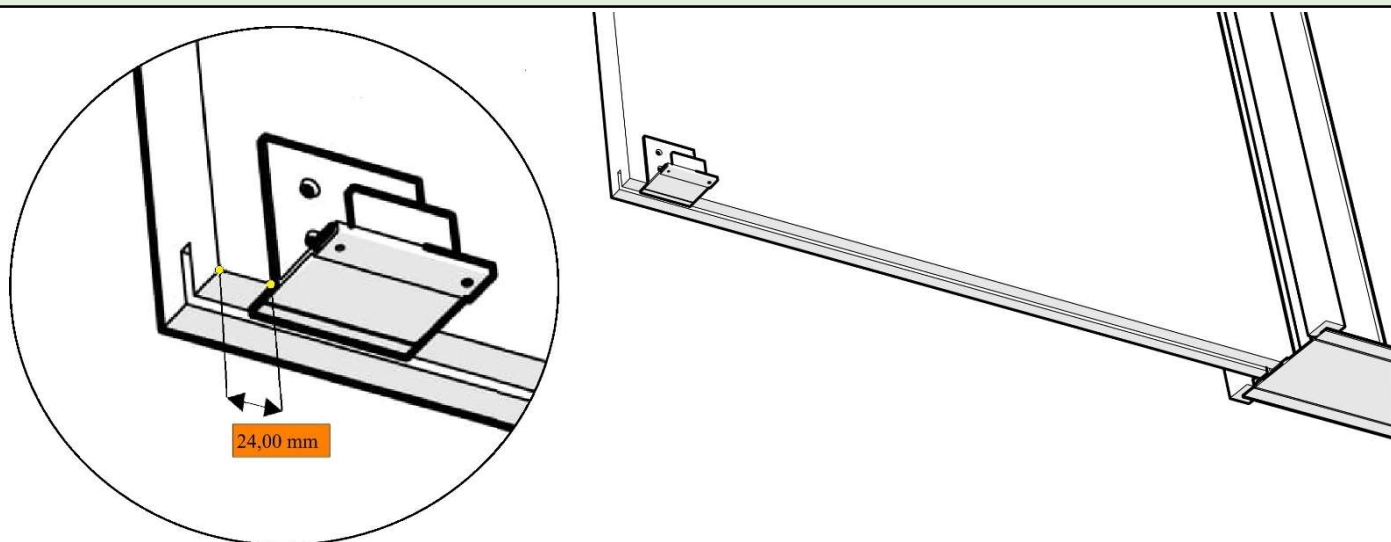
For 40-42 mm door



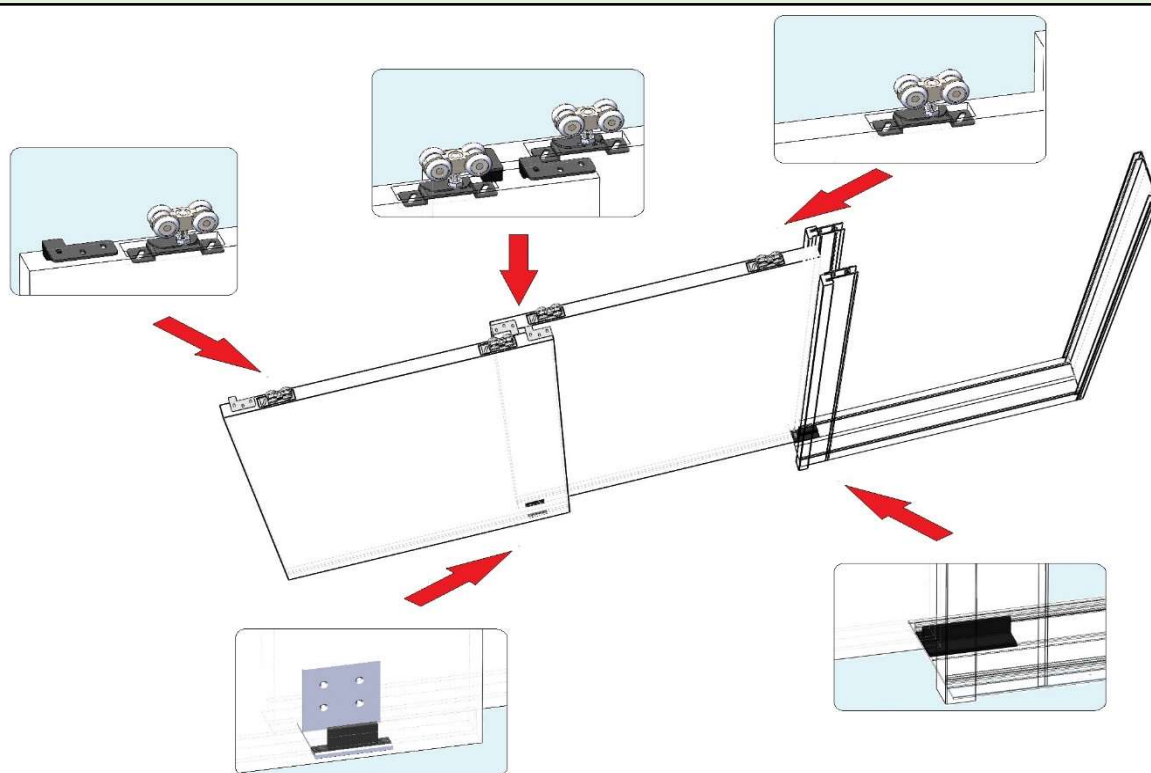
For 35-37 mm door



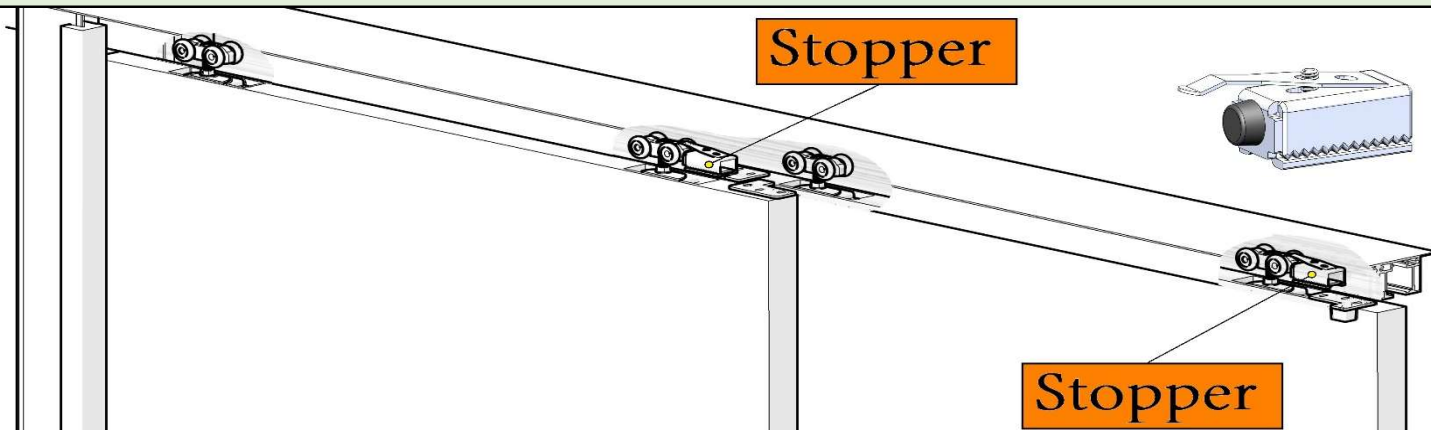
Step 5 Install J-Shape Guide



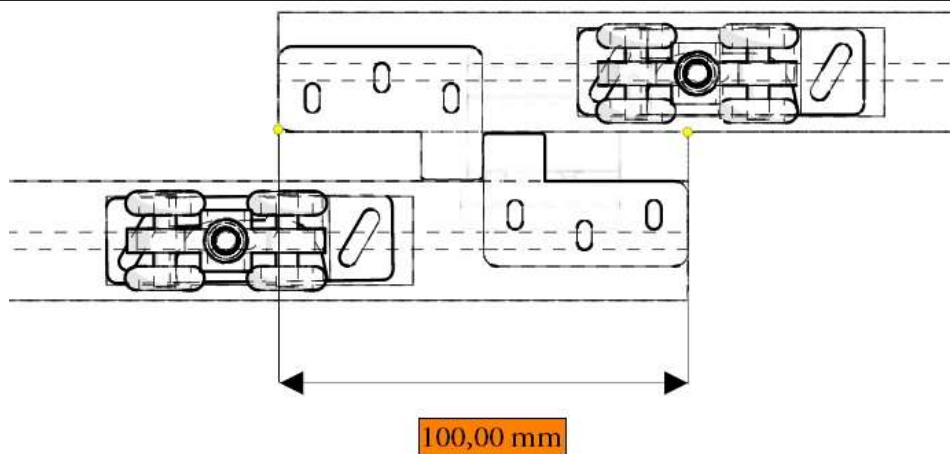
Step 6 Install all stackin kit



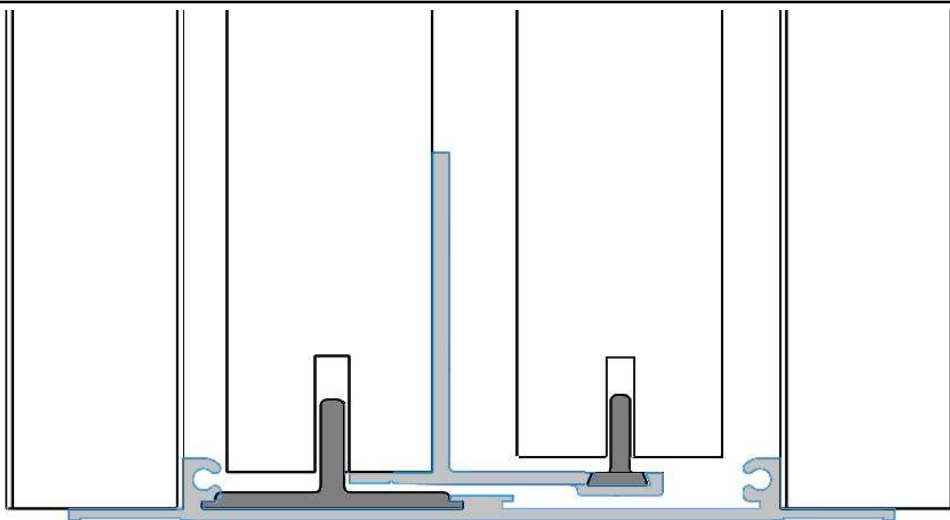
Step 7 Install stoppers



Step 8 Door overlap



Step 9 Groove T-guide



Fixing points:

- A Split Jamb
- B Heatd track
- C Back post
- D Bottom track
- E Closing Jamb

