

WS410-2 USERS GUIDE

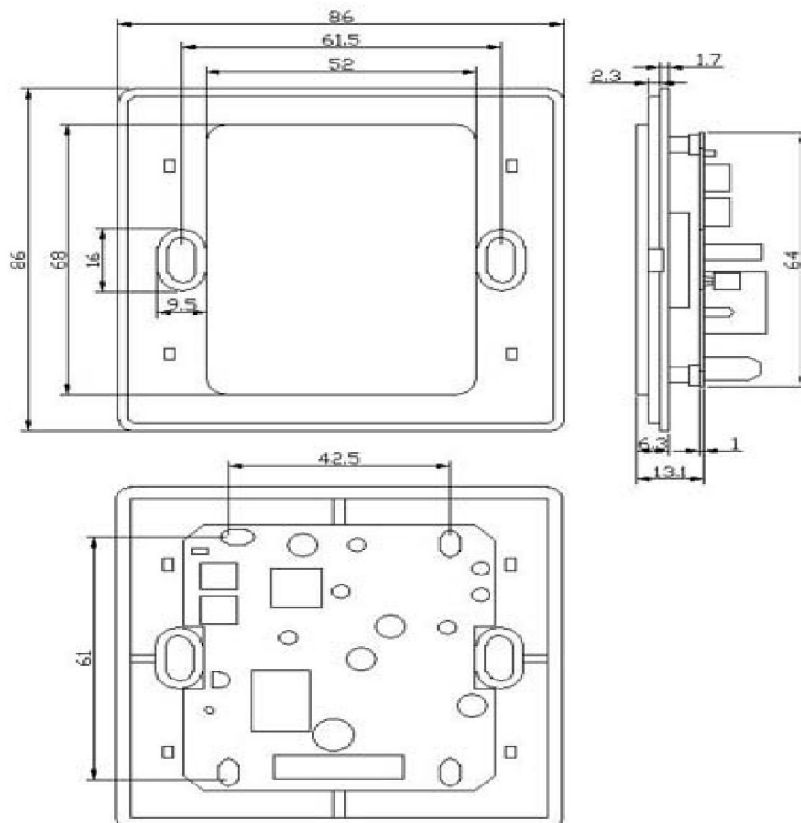
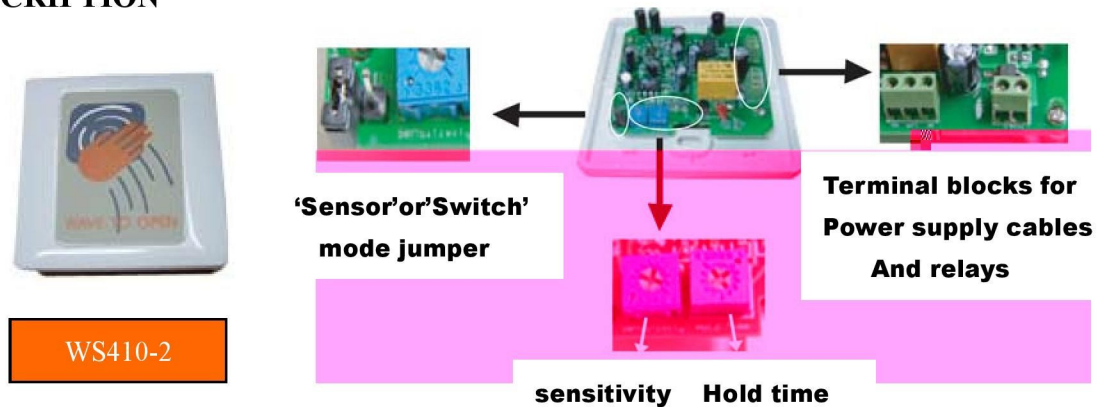
MICROWAVE CONTACTLESS SENSOR SWITCH

INTRODUCTION

The WS-410-2 contactless sensor-switch is a Microwave motion sensor switch. It comprised of a 'Sensor' or 'Switch' mode. In 'Sensor' mode, the output relay will activate when it detects a motion. In 'Switch' mode, the output relay will toggle when there is a motion.

It is truly a 'Sensor Switch'! It is particularly Suitable for clean rooms, sterile areas, common areas, etc. It is also very useful in areas/rooms that required very high hygienic environment.

DESCRIPTION





7. Use screwdriver to jack-out the cover frame out from the sensor-switch.



8. Power up the sensor and check whether the LED lights up.
9. Check the sensitivity & repeat step 5 to adjust the sensitivity.




10. Push the sensor-switch into the box & screw tight the sensor.
11. Push the cover frame to the sensor to lock it up.

SETTING THE SENSING FIELD AND HOLDING TIME


VALID ONLY FOR 'SENSE' MODE

0.5sec



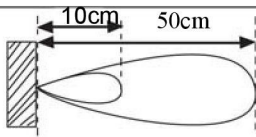
PT2

10sec




PT2

HOLEING TIME




MIN



PT1

MAX



PT1

SENSING FIELD

TROUBLE-SHOOTING

SYMPTOM	CORRECTIVE ACTION
LED not lighted or blink (upon powered up).	1. Check if the cable is screwed tightly. 2. Check whether the supply is turned 'ON'.
Door does not open.	1. Check whether LED is turn ON. 2. Check the sensor's connection. 3. Check the sensor output (relay NC/NO) connections.
Door remains permanently open.	1. Check Holding Time (PT2). 2. Check for surrounding disturbance. 3. Reduce the sensitivity level (PT1). 4. Is it in 'Switch' mode?