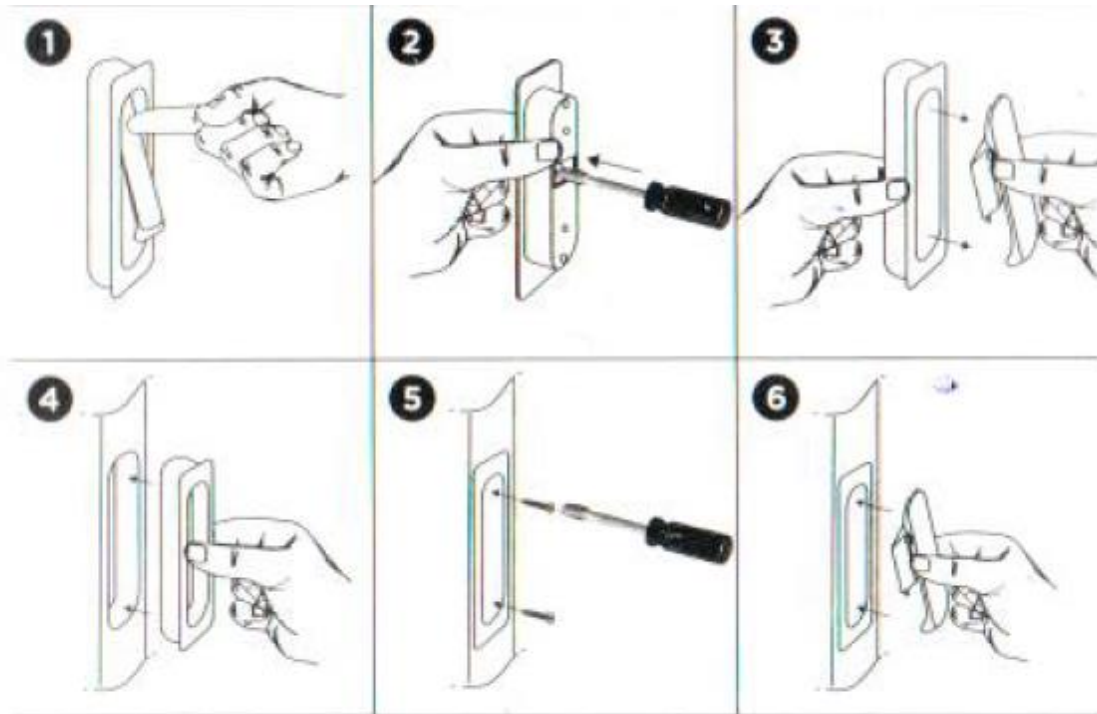


## Fitting Instructions for 70171 Sliding Door Edge Pull



### Fitting Instructions

1. Check function of edge pull by pressing top of arm.
2. With back of pull facing you – insert small screwdriver into slot & press down.
3. Pull out arm mechanism.
4. Check out appropriate cavity in door to take body of pull.
5. Fix with screws provided.
6. Press arm mechanism back into body of pull & check function.