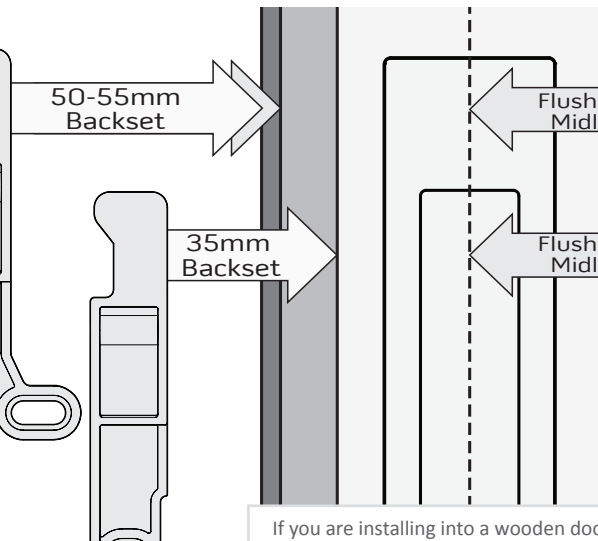


Selecting the Correct Backset



50-55mm Backset

35mm Backset


Flush Pull Midline

Flush Pull Midline

If you are installing into a wooden door you will need to follow the steps below to swap from 35mm backset to 50-55mm backset.

Diagram 1 shows the assembly of the top plate. A large, light-colored rectangular plate is being positioned above a darker, more complex base plate. Four screws are shown being inserted into the top plate, with dashed lines indicating they will pass through the top plate into the base plate. The base plate has a central rectangular cutout and a smaller rectangular slot on the right side. The top plate has a small rectangular cutout in the center and a larger rectangular slot on the right side. The screws are being inserted from the top of the top plate.

2



Caution: When changing backset, ball bearing and spring might come out.

3

This diagram shows the handle being attached to the lock body. A small arrow points to a screw that is being inserted into the handle. A large arrow points down to the lock body, indicating the assembly direction.

4

Diagram 4 shows the bracket being mounted to a wall. Four screws are shown being inserted into the pre-drilled holes in the bracket. The screws are being inserted from the back of the bracket, passing through the wall into the studs. The bracket is shown in a perspective view, with the wall and studs visible behind it. The screws are being inserted into the top and bottom holes on both sides of the bracket. The bracket is labeled "CONCRETE" and "STUDS".

Contents Inside Package

x2
No. 8
1

x2
No. 8
3/4

x4
No. 6
3/4

x1

x1

x1

x1

x1

x1

x1

x1

x1

x1

x1

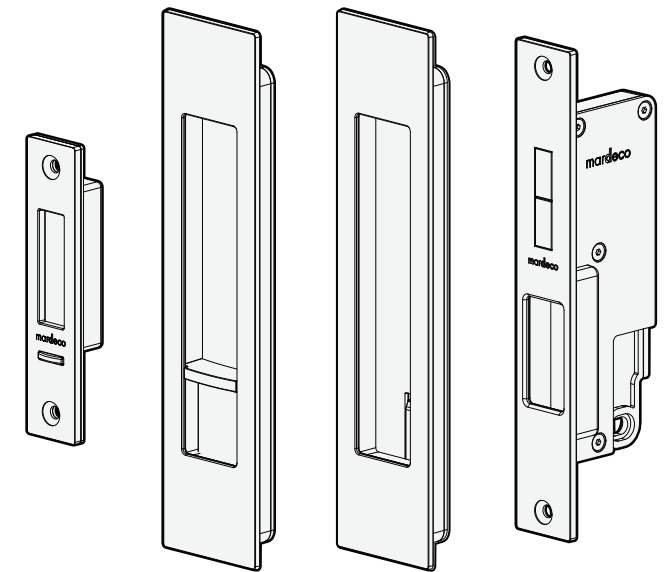
x1

x1

Please ensure you have received all the correct parts before installation. Mardeco International Ltd takes no responsibility for incorrect product being fitted.

Stainless Steel
Screws supplied by:

Germany



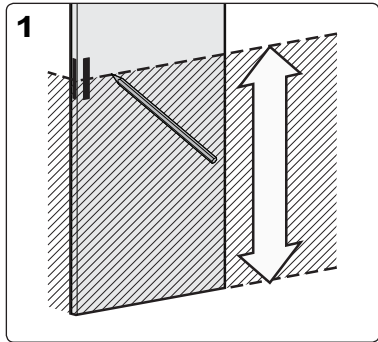
Copyright © 2012 Mardeco International Ltd. All rights reserved. For full Terms & Conditions please visit our website.



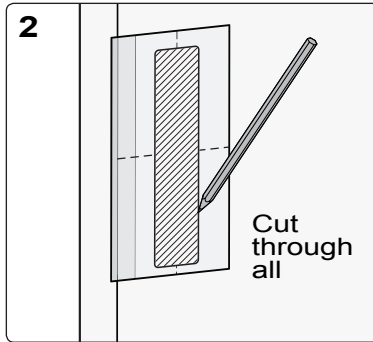
Scan QR code to
view a step by step
installation video

Stainless Steel
Screws supplied by:

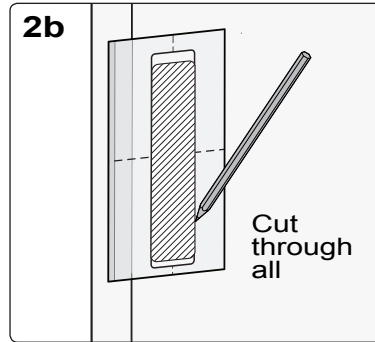




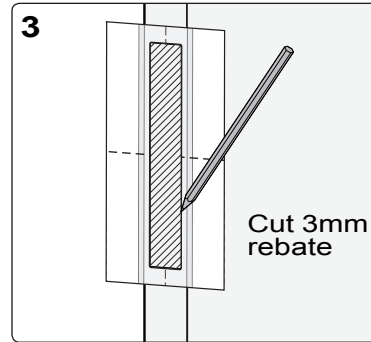
1 Mark midline on all 3 faces of the door. Choose a height that will be comfortable for all users to reach.



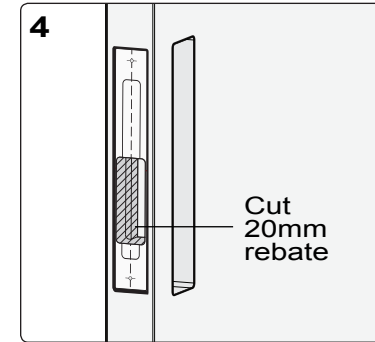
2 Wood Cutout: Remove middle section of flush pull template and mark cutout outline. Use midline as height reference. Mark for desired backset (35 or 50/55mm). Cut through all.



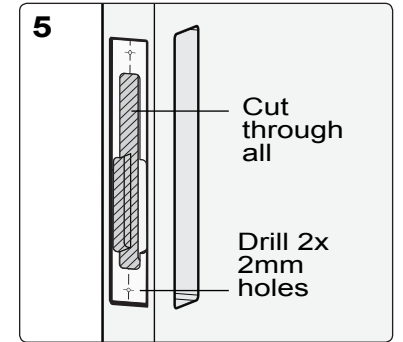
2b Aluminium Cutout: Match midline with template midline and position for desired backset. Mark aluminium cutout outline. Cut through all.



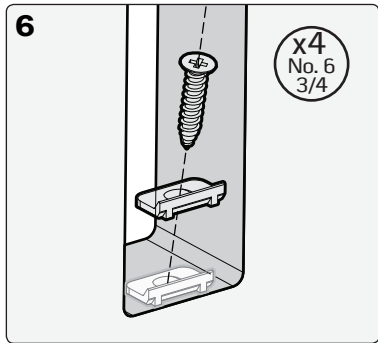
3 Remove middle section of end pull template and mark rebate outline on end of door. Use midline as height reference. Cut 3mm rebate.



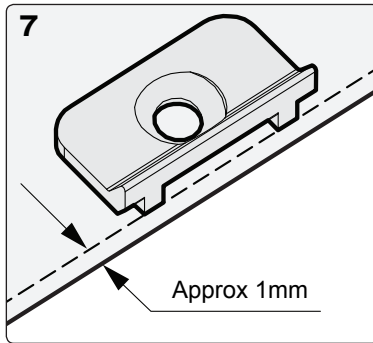
4 Place middle section of template into rebate and mark second rebate outline. Ensure it is the correct way up. Cut 20mm rebate



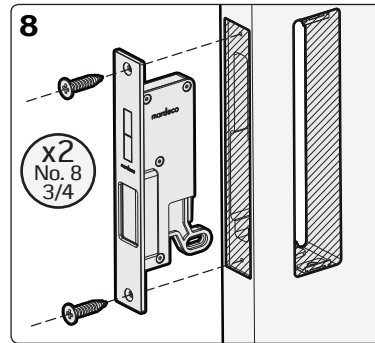
5 Mark the third rebate outline. Cut through into flush pull cavity. Mark screw hole locations. Drill two 2mm dia holes for the screws.



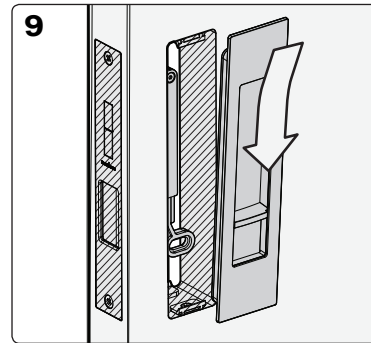
6 For wooden doors: install two woodfix brackets at top and bottom of cutout on both sides of the door.



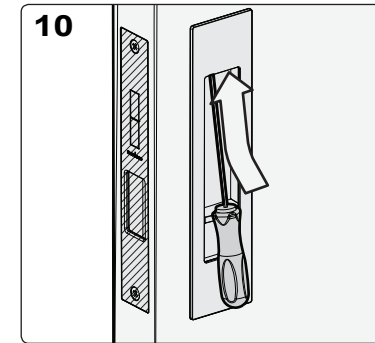
7 Fix brackets in centre of the cutout with the ridge facing outwards. Ensure that they are approx 1mm inside the edge and do not protrude.



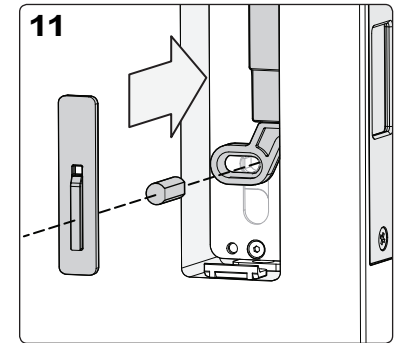
8 Insert the Privacy Lock assembly and secure with two No.8 3/4screws. Check lock is set up for the correct backset: see instructions for changing the backset.



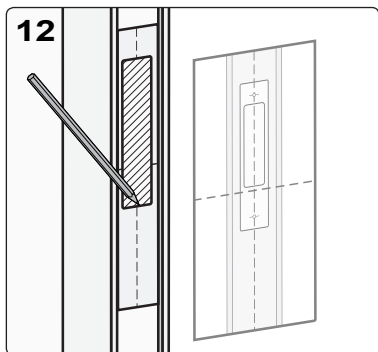
9 Insert the flush pull with the slide lock into cavity on the chosen side of the door. Push in and down so it grips onto the bottom bracket or edge.



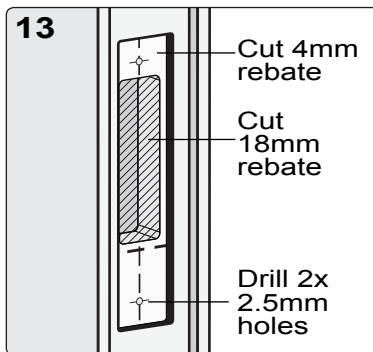
10 Use Mardeco hex tool to tighten grub screw inside top of flush pull. Ensure it is fitted firmly.



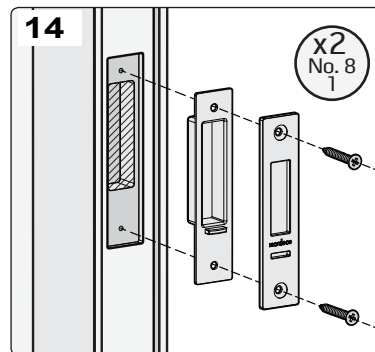
11 Insert spindle and emergency slide into the back of the lock slide. Choose the correct length spindle to suit your door thickness. Repeat steps 9 and 10 for installing the second flush pull.



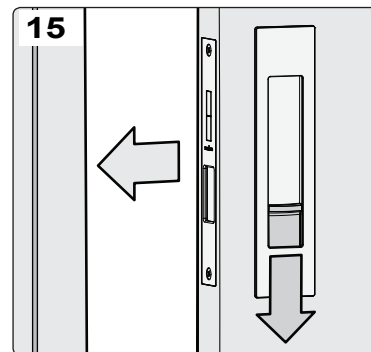
12 Remove middle section of striker plate template and mark outline for rebate. Use midline as height reference and ensure it lines up with the door. Cut a 4 mm rebate.



13 Place middle section of template into rebate and mark second rebate outline. Ensure it is the correct way up. Cut 18mm rebate. Mark screw holes and drill two 2mm holes 15mm deep.



14 Insert striker plate assembly and secure with two No.8 1 screws.



15 Test that everything works well and make any necessary adjustments. Enjoy using your new M Series Privacy Set.

Mardeco International Ltd.
PO Box 131
Whangaparaoa 0943
Auckland, New Zealand
Phone: +64 (0) 9 428 0658
Email: info@mardeco.co.nz
Web: www.mardeco.co.nz

mardeco[®]
international ltd
we handle the best